









## XCubeNXT Quick Installation Guide

Thank you for purchasing QSAN storage system.

### 1 BEFORE YOU BEGIN

#### Package Contents

A QSAN storage system includes:

System Chassis (x1)		Disk Drive Trays		Slide Rail Kit (x1)	
		(x24 LFF <sup>1</sup> ) for 4U 24-bay (x16 LFF) for 3U 16-bay (x12 LFF) for 2U 12-bay (x26 SFF <sup>2</sup> ) for 2U 26-bay			
AC Power Cords (x2)	RS-232 Console Cable	Screws Pack for Disk Drives	10 Gb SFP+ Gbic		
	(x2) for dual controller model (x1) for single controller model 		(x4) for dual con model (x2) for single con model 		
This Quick Installation Guide					

#### Optional Accessories

You can check the optional accessories on QSAN website : <https://www.qsan.com>

#### Prepare System Information for Installation

- System name
- Admin password
- NTP server address
- Management IP address at controller 1
- DNS server address

#### More Information

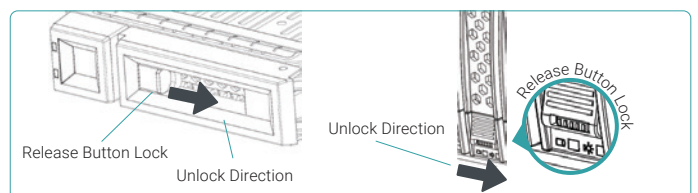
For additional hardware manual, software manual, or compatibility matrix which includes HDD, SSD, HBA, and switch requirements, please refer to the QSAN download center.

- <sup>1</sup> LFF : Large Form Factor / 3.5" disk drive  
<sup>2</sup> SFF : Small Form Factor / 2.5" disk drive

### 2 INSTALL THE DISK DRIVES

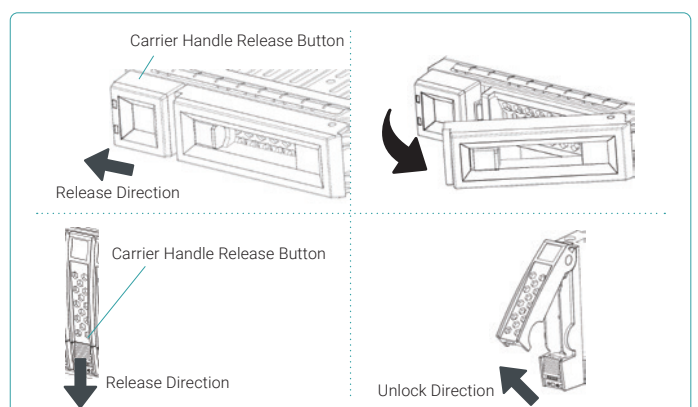
#### Unlock the Disk Drive Tray

- The standard position of the disk drive tray is locked to prevent damage during transport.
- To unlock LFF or SFF disk drive tray: shift the release button lock from left to right.



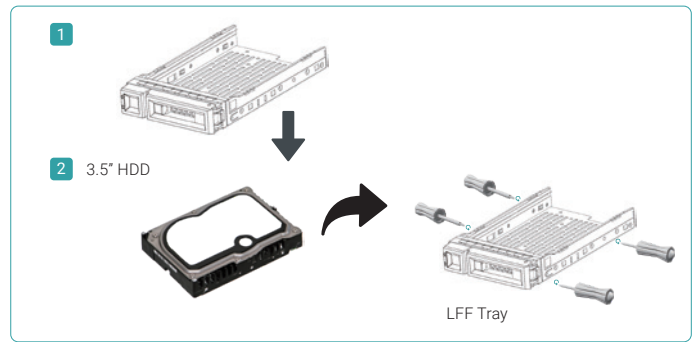
#### Open the Carrier Handle of a Disk Drive Tray

- The procedure of opening an LFF disk drive tray carrier handle: shift the carrier handle release button from right to left; then carrier handle will automatically pop out.
- Open an SFF disk drive tray carrier handle: shift the carrier handle release button from up to down; then carrier handle will automatically pop out.



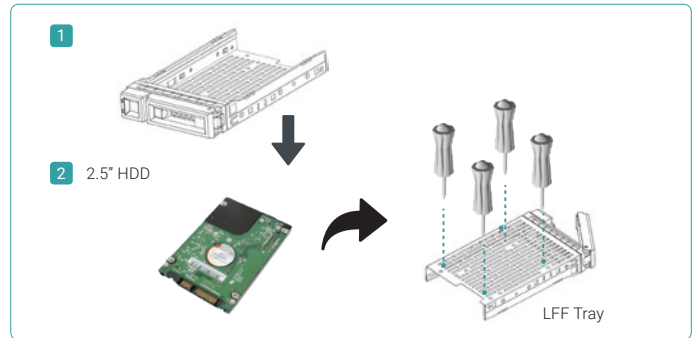
### Install an LFF Disk Drive into an LFF Tray

1. Place a disk drive tray onto a stable surface.
2. Align the disk drive to the tray (with disk connector facing away from carrier handle) and align the four disk drive tray screw holes located on both sides of the hard drive.
3. Install and tighten all four screws to secure the disk drive within the tray.



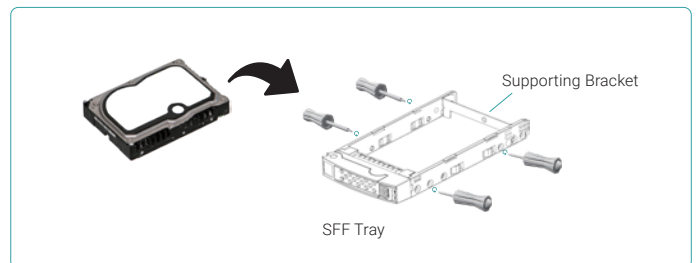
### Install an SFF Disk Drive into an LFF Tray

1. Place a disk drive tray onto a stable surface.
2. Align the disk drive to the tray with the connector facing away from the carrier handle.
3. Align the four disk drive tray screw holes (front row at the bottom side of the tray for SAS interface disk drive; a rear row for SATA interface SSD) to the disk drive.
4. Install and tighten all four screws to secure disk drive.



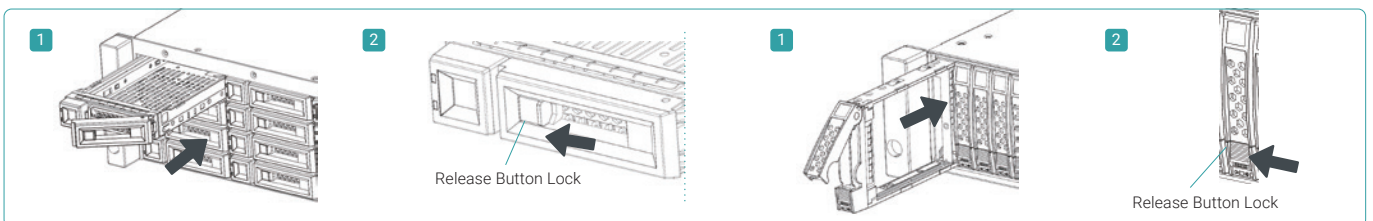
### Install an SFF Disk Drive into an SFF Tray

1. Place a disk drive tray onto a stable surface.
2. Remove the supporting bracket. Then align the disk drive with the connector facing away from the carrier handle.
3. Align the four disk drive tray screw holes on both sides of the disk tray.
4. Install and tighten all four screws to secure disk drive within the tray.



### Install the Tray with the Disk Drive into the System Chassis

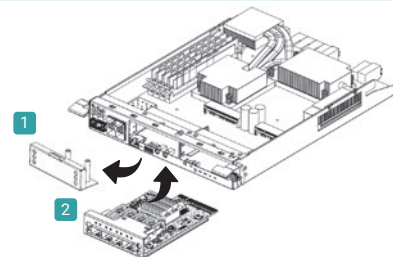
- Users must open the carrier handle of a drive tray before installing it into the empty bay of the system chassis.
- The following is the procedure for installing a disk drive with the tray into the system for both LFF and SFF disk drive trays.
  1. Align a disk drive with the tray to the empty bay you would like to install and then push it all the way into the disk drive bay until the carrier handle can be closed.
  2. Lock the release button lock by pushing the lock from right to left.
- Refer to the label on the system chassis for disk drive numbering.



## 3 INSTALL THE OPTIONAL HOST CARDS

Please refer to the hardware manual for detailed instructions.

1. Uninstall host card dummy bracket.
2. Insert host card to host card slot 1.



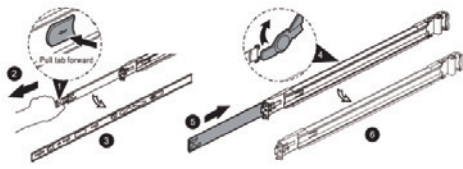
## 4 INSTALL THE RAIL KIT



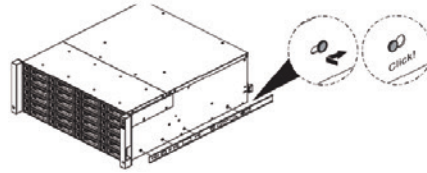
### CAUTION:

The populated storage system can be very heavy, to avoid any potential injury or harm to installers, or damage to the system, we strongly recommend at least two certified operators or engineers perform the system installation.

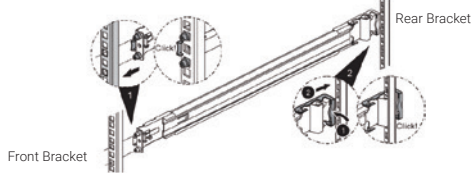
1 Pull the inner rail out and slide the intermediate member back.



2 Install the inner rail onto the chassis.



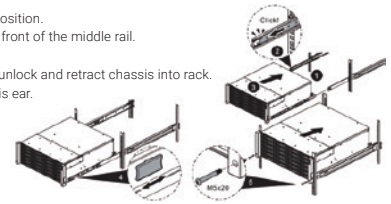
3 Install the outer rail / bracket assembly to the frame.



Note : Please repeat the installation steps for the other side.

4 Insert the chassis to complete the installation.

Step 1. Pull the middle rail fully extended in locked position.  
 Step 2. Ensure ball bearing retainer is located at the front of the middle rail.  
 Step 3. Insert chassis into middle-outer rail.  
 Step 4. When hit the stop, pull / push release tab to unlock and retract chassis into rack.  
 Step 5. Use M5 x 20mm screws to fasten the chassis ear.



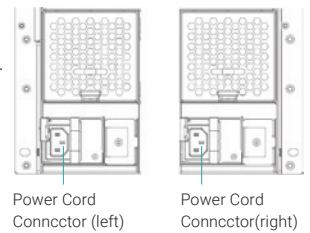
## 5 POWER ON THE STORAGE SYSTEM

### Connect the Power Cables

1. Connect power cables from each power supply module to a power source.
2. Make sure to secure the power cables to the power supply modules so they can not be pulled out accidentally.

### Power on the System Components

1. Power on any network switches, routers, or other standalone components.
2. Power on any expansion enclosures that might be a part of the system.
3. Power on the system by pressing the power button on the front of the system.



**TIP:** Please wait for the controller status LED to turn green on the rear of the chassis before attempting to discover or manage the storage system. It may take a few minutes to boot the system.

4. See the diagram below to determine the meaning of the lights and indicators on the front of the system.



1. Enclosure Power Button / LED
2. UID (Unique Identifier) Button / LED
3. Enclosure Access LED
4. Enclosure Status LED
5. USB Port

## 6 DISCOVER AND SETUP THE SYSTEM

### Discover the System

The default setting for the management IP address is DHCP. We provide the XFinder Java utility to search for QSAN products on the network and aid quick access to the login page of the web interface.

### XFinder Utility

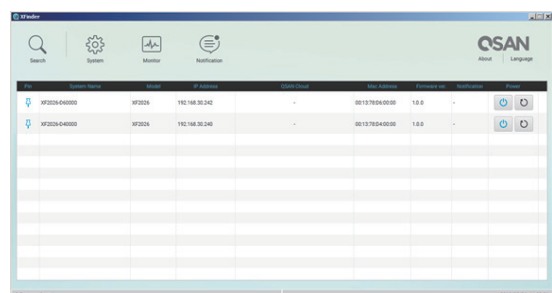
To download XFinder, please visit : [https://www.qsan.com/download\\_center](https://www.qsan.com/download_center)

XFinder is a Java based program. To execute this program, JRE (Java Runtime Environment) is required. You can visit the following website to download and install JRE : <http://www.java.com/download>

After JRE is installed, run the XFinder.jar program. The storage system in your network will be detected and listed in the table.

Select the system you are looking for. Double clicking the selected entry will automatically bring up the browser and display the login page.

**TIP:** If the LAN doesn't have a DHCP server, the management port will be assigned a fix IP address: 169.254.1.234/16. So you can configure the IP address of your management computer to the same subnet domain of the storage system, e.g.: 169.254.1.1/16. Then open a browser and enter <http://169.254.1.234> to go into the login page.

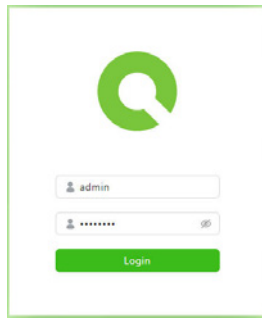


## Initial Setup

### Step 1

To access the QSM web interface, you have to enter a username and password. The initial defaults for the administrator login are:

- Username: **admin**
- Password: **1234**



### Step 2

The initial configuration wizard will guide the first time user to initialize and setup the system quickly.

## Storage Management

After initial setup, the next step is to configure the specific storage settings for your requirement. For more information about managing the storage, please refer to the QSM software manual which can be downloaded from the QSAN website : [https://www.qsan.com/download\\_center](https://www.qsan.com/download_center)

By installing or using QSM onto the QSAN products, you agree to be bounded by the terms of warranty and service. For more detail, please go to QSAN website : <https://www.qsan.com/warranty>

## 7 GETTING TECHNICAL SUPPORT

Please follow the troubleshooting tips in the hardware manual or the software manual to diagnose and resolve common problems during initial setup and configuration. If you are still encountering trouble, please contact QSAN technical support for help using one of the options below.

- Via the Web : [https://www.qsan.com/technical\\_support](https://www.qsan.com/technical_support)
- Via Telephone : +886-2-7720-6355 (Service hours : 09:30 - 18:00, Monday - Friday, UTC+8)
- Via Skype Chat, Skype ID : qsan.support (Service hours : 09:30 - 02:00, Monday - Friday, UTC+8, Summer time : 09:30 - 01:00)
- Via Email : [support@qsan.com](mailto:support@qsan.com)

