

# XCubeFAS XF2026D

Flash For All All New Flash, All New Experience |

**QSAN**  
Beyond Storage

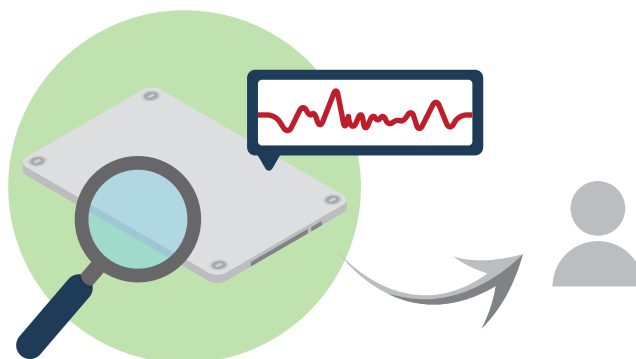
## Flash for All

Think about that storage that is superior, simple, secure, and gives you more time to concentrate on your business. XCubeFAS XF2026D is user-friendly: it helps you manage your storage within just a few clicks, and if you are not available at your seat during the day, you may operate your XF2026D with your mobile device. It offers you the most superior storage services, available only to enterprise storage experts, that can help you to analyze the status of your business usage, preventing accidental damages caused by human negligence. With XF2026D, this highly scalable all-flash array solution, you can expand your storage as your business grows without ever requiring downtime or forced hardware upgrade every 3-5 years. Just have it today – enjoy your XF2026D.

## QSAN DNA, Infinite potential

### Native SSD Monitoring

Try to imagine that you will never again forget to replace your SSDs before they fail. QSLife, QSAN's native SSD technology, offers users a specified technology to analyze the SSD activity and uses a unique algorithm to help you keep an eye on the health and other information of your SSD drives and will alert you at any awareness point after you set up the threshold.



### Consolidate Your Usage

Monitor your storage with XEVO operating system with your notebook, tablet, or mobile device. It can generate performance and capacity analytics as far back as 1 year for you, powered by QSAN XEVO analysis system. This allows IT generalists who have our XF2026D solution to analyze the storage usage faster than ever and easier than the other all-flash competitors.

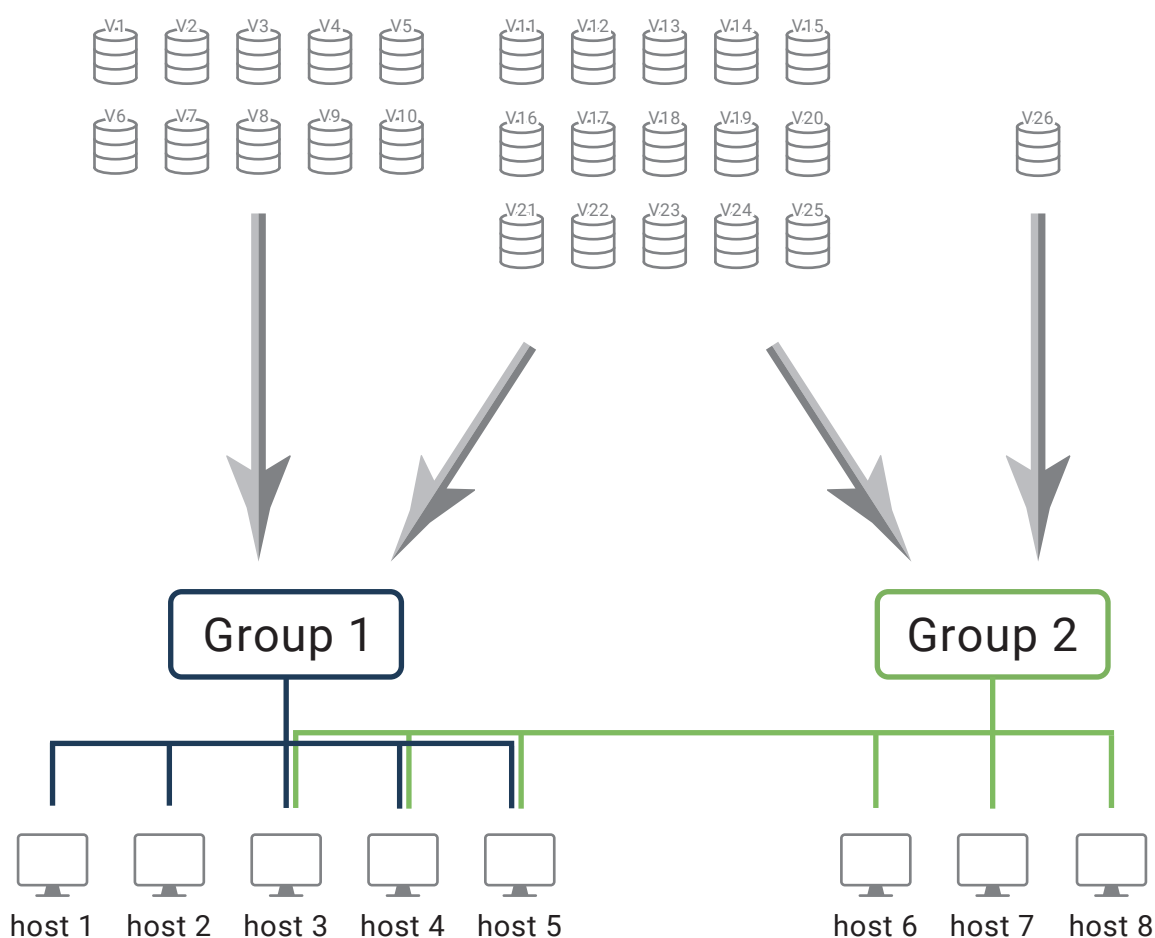
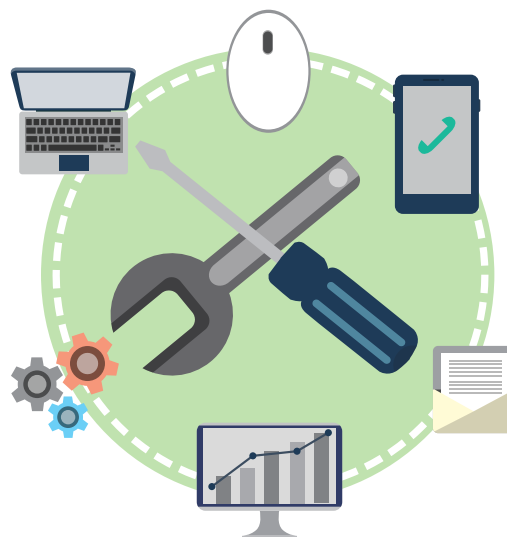
### Always On Top

Performance has always been the proudest part of QSAN's product. Over decade experience, our solutions have been used in many industries around world. With our technology and experience, XCubeFAS XF2026D can deliver the ultra-high performance, stability, and reliability that can fulfill any missions of your side.

# Redefine the professional

## Always Simple

XF2026D simplifies itself – freeing you from complicated process of deploying your storage. Power it on and clicking your finger within just few times (with our recommend configurations), then enjoy the convenience and focus on your business without paying too much attention on setting up your storage.



## Always Grouping Batch

Manage your storage with XEVO operating system – you can establish your storage through grouped operation. Grouping what you want, such as volumes, hosts, to decrease your loading of manage tones of different devices' connections or backups. Grouping batch operation can help you save tones of time to manage your storage and prevent accidental damages caused by human negligence.

## Always Multiple

Imagine that you have to establish a huge amount of storage environments at a time. In the past, we have to operate our storage system for several times to meet our goals. With XF2026D, you can save your time at building storage environments by utilizing automatic functions that enables you to deploy multiple volumes in just one step.

# Control the overall situation

## Always Rescue

Save your data from accidental deletion. Snapshot recycle bin and volume restoration can restore your accidentally deleted data. This feature can increase the resilience of your valuable data and offer you to manage your storage in high elasticity.



## Always Diversified

Multiple backup solutions give you more choices to protect your data. By auto replication, you can easily deploy the remote replication without doing configurations. Through local-to-remote, you can transfer your local backup to remote sites without redoing full copy again. This technology gives you multiple ways to protect your digital assets safely.



Host Applications	<div><div>FC</div><div>iSCSI</div><div>ODX</div><div>VAAI</div><div>MPIO</div></div>	<div><div>VSS</div><div>APIs</div></div>	<div><div>SAS 3.0</div></div>
Data Services	<div><div><div><div><div></div><div></div><div></div></div><div>QThin</div></div><div><div><div></div><div></div><div></div></div><div>HA</div></div></div><div><div><div></div><div></div><div></div></div><div>QSRaid</div></div><div><div><div></div><div></div><div></div></div><div>QoS</div></div></div> <div>AVAILABILITY</div> <div><div><div><div></div><div></div><div></div></div><div>C2F</div></div><div><div><div></div><div></div><div></div></div><div>QReplica</div></div></div> <div><div><div></div><div></div><div></div></div><div>QClone</div></div> <div><div><div></div><div></div><div></div></div><div>QSnap</div></div> <div>PROTECTION</div> <div><div><div><div></div><div></div><div></div></div><div>QSLife</div></div><div><div><div></div><div></div><div></div></div><div>QReport</div></div></div> <div>MONITOR</div>	<div><div><div></div><div></div><div></div></div><div>SED</div></div> <div>SECURE</div>	
Core Technologies	<div><div><div><div></div><div></div><div></div></div><div>QSOE</div></div><div><div><div></div><div></div><div></div></div><div>Space Reclaim</div></div></div> <div>ENGINE</div>	<div><div>99.9999%</div><div>Reliability</div></div> <div><div><div></div><div></div><div></div></div><div>LVM</div></div> <div><div><div></div><div></div><div></div></div><div>Bin</div></div> <div>AFA MANAGEMENT</div>	

## Always Solid

All of the critical components in the XF2000 series are hot pluggable and designed with full redundancy. Additionally, dual-active controller design and automatic failover/failback mechanism and cache mirroring through NTB (Non-Transparent Bridge) bus to achieve Active-Active functionality allows the XF2000 series to withstand multiple component failures and achieve 99.9999% availability. With 99.9999% availability, XF2026D delivers reliably ultra-high performance and comprehensive storage functionality through maintenance, upgrades, operation, protection, management, encryption, and monitoring. With QSAN's technology support, you can save more time to focus on your business than on the storage.

# Hardware Specifications

Model Name	XF2026D			
Form Factor	2U 26-bay, SFF			
RAID Controller	Active-active dual controller			
Processor	Intel® Xeon® 4-core processor			
Memory (Per Cntrller)	DDR4 ECC 32GB, up to 128GB (four DIMM slots, insert two DIMMs or more will boost performance)			
Host Connectivity (Per Controller)	Host Card Slot 1 (optional): 4 x 16Gb FC (SFP+) ports 2 x 16Gb FC (SFP+) ports 4 x 10GbE iSCSI (SFP+) ports 2 x 10GbE iSCSI (RJ45) ports		Host Card Slot 2 (optional): 4 x 16Gb FC (SFP+) ports <sup>1</sup> 2 x 16Gb FC (SFP+) ports <sup>1</sup> 4 x 10GbE iSCSI (SFP+) ports <sup>1</sup> 2 x 10GbE iSCSI (RJ45) ports	
	Built-in 2 x 10GBASE-T iSCSI (RJ45) ports Built-in 1 x 1GbE management port			
Expansion Connectivity (Per Controller)	Built-in 2 x 12Gb/s SAS wide ports (SFF-8644)			
Drive Type	2.5" SAS, SED² SSD			
Expansion Capabilities	Up to 4 expansion units using XD5326 (SFF 26-bay) 12Gb SAS expansion enclosure			
Max. Drives Supported	130			
Dimension (H x W x D)	19" Rackmount 88 x 438 x 491 mm			
Memory Protection	Cache-to-Flash module Battery backup module + Flash module			
LCM	USB LCM (optional)			
Power Supply	80 PLUS Platinum, two redundant 770W (1+1) <div><div>AC Input</div><div>100 - 127V    10A, 50-60Hz 200 - 240V    5A, 50-60Hz</div><div>DC Output</div><div>2V    63.4A +5VSB    2.0A</div></div>			
Fan Module	2 x hot pluggable/redundant fan modules			
Warranty	System : 3 years Battery backup module : 1 year ; Super capacitor module : 1 year			
Regulatory	CE, FCC, BSMI, VCCI, KCC			
Temperature	Operating temperature : 0 to 40°C Shipping temperature : -10°C to 50°C			
Relative Humidity	Operating relative humidity : 20% to 80% non-condensing Non-operating relative humidity : 10% to 90%			

<sup>1</sup> Slot 2 provides 20Gb bandwidth.

<sup>2</sup> SED drive support will be available in Q4 2018.